

Brownfields Downeast: A Glass Half Empty or Half Full?



Washington County
Council of Governments





Real property, the expansion, redevelopment, or reuse of which may be complicated by the presence or potential presence of a hazardous substance, pollutant, or contaminant.



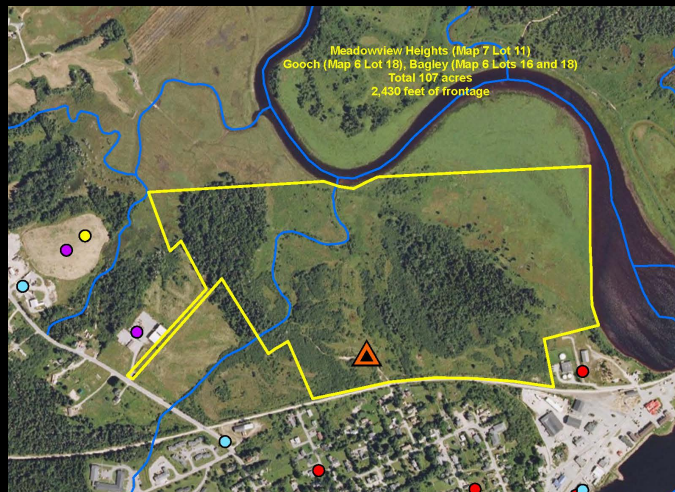












Glass Half Empty or Half Full?

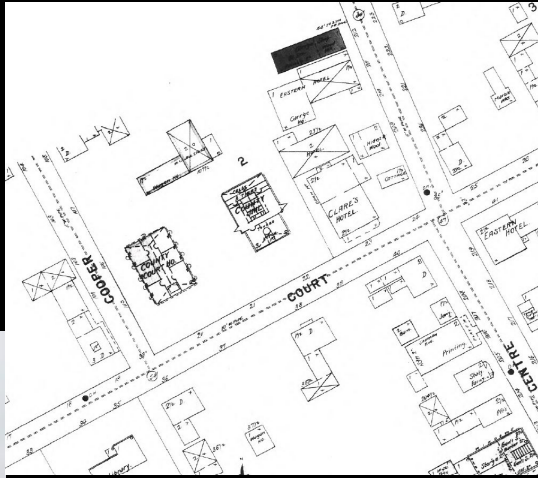
The Site Assessment Process

- I. Site Nomination
- II. Site Ranking (e.g., re-development plans, job creation, location, etc.)
- III. Access Agreement
- IV. Phase I Environmental Site Assessment (ESA)
- V. Phase II ESA – Subsurface Investigation
- VI. Re-Use Planning and VRAP Closure – *Brownfields Success Stories*



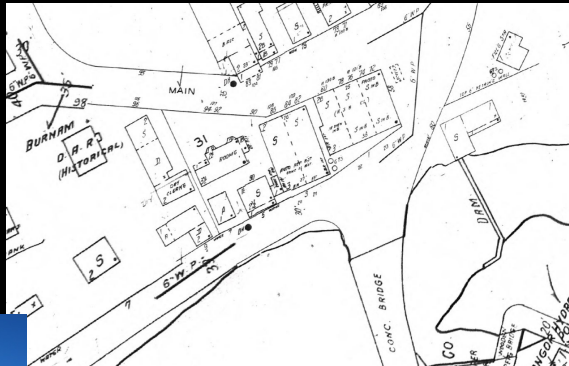
Phase I ESA – Historical Research

County Court House, Machias



Phase I ESA – Historical Research

5 & 10 Store (now Axiom), Machias



Phase II ESA – Subsurface Investigations



Geophysical survey, Machias

Test pits & gasoline tank removal, Harrington



Phase II ESA – Subsurface Investigations

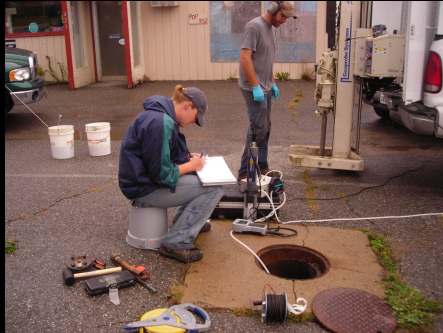


GeoProbe soil borings, Eastport

Test pits, Eastport



Phase II ESA – Subsurface Investigations



Ground water sampling, Pembroke

Soil gas sampling, Harrington



Brownfields Success Stories

- Consea/Lighthouse Lobster & Bait, Eastport



Brownfields Success Stories

- MDOT Garage/Pembroke Town Office, Pembroke



Brownfields Success Stories

- The Boat School/Ocean Renewable Power Co., Eastport



Brownfields Success Stories

- Guilford Mill/Millennium Marine, Eastport



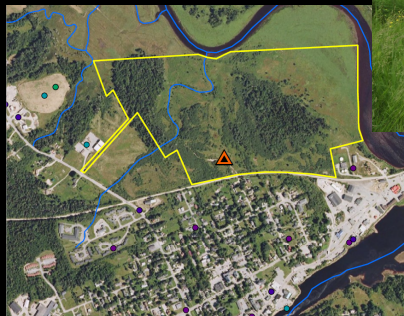
Brownfields Success Stories

- 5 & 10 Store/Axiom Tech., Machias



Brownfields Success Stories

- Middle River Parcel, Machias



For Further Information

Washington County Council of Governments (WCCOG) Website

<http://www.wccogbrownfields.com/>

Site Includes:

- Nomination Forms and Site Maps
- Frequently Asked Questions (FAQ) Sheets
- Access to completed Phase I & II ESA Reports
- Related Press
- Updates for ongoing projects
- Contact Information
- Other Program-Related Information

Washington County Council of Governments

Home Program Services Library Contacts

WCCOG Brownfields Program

Success Stories!

To date, the WCCOG Brownfields program has conducted environmental assessments of 20 properties. Our work has smoothed the way for property transactions, promoted site redevelopment, and improved understanding and management of environmental risk.

News

6/10/14 **Brownfields Outreach Seminar planned for June 26 in Machias**
 WCCOG is hosting a Brownfields seminar titled, Brownfields Property Transactions and Redevelopment: A Focus on Downeast Maine. The seminar features speakers from WCCOG, Eaton Technology, Maine DEP and GSI Consultants, Inc.

Event Flyer

6/26/14 **WCCOG Awarded \$400,000 Brownfields Grant Renewal**
 EPA announced awards of \$1.3 million for seven Brownfields projects in Maine. Among the winners was WCCOG's county-wide Brownfields assessment program. To date, the program has received \$2.2 million in EPA funding leading to redevelopment or conservation of numerous properties from Millbridge to Eastport.

3/14/14 **Pembroke Town Office Near Completion**
 Renovations are nearly complete to the Pembroke town office building, a former Maine DOT highway maintenance garage on Route 1. The WCCOG Brownfields program provided environmental assessment and planning support for the project beginning in 2012. The assessment targeted concerns around existing or former underground fuel and waste oil tanks.

Related Press

11/6/14 **WCCOG to Pursue Renewed Brownfields Funding**
 WCCOG is working on its first Brownfields grant application for renewed environmental assessment funding from EPA. Popularity of the program, which began in 2009, has led to redevelopment of eleven properties and leveraging of over \$2.3 million in investments in Washington County.

12/10/13 **Environmental Assessments Approved for Baileyville Landmark**
 WCCOG's Brownfields Advisory Committee approved preliminary environmental assessment of the McLaughlin Cabins site. The property includes several guest cottages, former residence and parking area on Route 4. The property includes several former granite quarries and a sawmill.

For Further Information

GROWashington-Aroostook Website

<http://www.gro-wa.org/>

Then click on the “Brownfields & Economic Renewal” link on the left side of the screen, followed by the “Property Transactions & Redevelopment Seminar” link (also on the left).

Site Includes:

- Speaker Bios
- Copies of Today’s Presentations
- Links to Other Information

