

Quick start guide for using the map of Maine's Local Food Network

The screenshot shows the 'Maine's Local Food Network' web application. At the top, there is a navigation menu with links: 'About The Project', 'Map Content', 'Tool Help', 'How To Use The Map', 'Contact Us', and 'Add Your Data'. Below the menu is a search bar with the text 'Explore the map: click on a point or choose one of these tools' and an 'Enter address' field. The main area is a map of Maine with various colored symbols representing different food network components. A 'Layers' panel on the right lists categories like 'Buying Clubs', 'Farmers' Markets & Farm S', 'Retail Stores', 'Farms', and 'Specialty Food Producers'. A pop-up window for 'Buy local food: Presque Isle Farmers Market' is open, showing details like address and phone number. A 'Zoom to' button is visible at the bottom of the pop-up. Several callouts with arrows point to specific map features: 'Return the map to its full size' points to a circular arrow icon; 'Learn how to use the tools here' points to the 'Tool Help' link; 'Complete map instructions' points to the 'How To Use The Map' link; 'Previous view of map map' points to a double arrow icon; 'Adjust map left, right, up or down with pan tool' points to a hand icon; 'Click on a symbol for information to be displayed in a pop-up window' points to a yellow square symbol; 'To zoom in, click here and then draw a box on the map around an area of interest' points to a zoom-in icon; 'Click "Zoom to" in the pop-up window to zoom the map to this place.' points to the 'Zoom to' button; and 'Click and drag down corner to see all layers' points to the bottom-right corner of the 'Layers' panel.

These instructions guide the use of the online map of Maine's Local Food Network prepared by Lisa Ravis and Laura Teisl at the UMM GIS Laboratory and Service Center. The map application supports the GROWashington-Aroostook regional planning process which focuses on job creation, modern infrastructure, and healthy, affordable communities in the counties of Aroostook and Washington in northeastern Maine. More information is available at <http://www.gro-wa.org/>.



Complete instructions for using the map of **Maine's Local Food Network**

Overview of the map

Maine's Local Food Network map was produced as part of the GROWashington-Aroostook project through a partnership between the Washington County Council of Governments and the University of Maine at Machias GIS Service Center in December 2013. Support was provided by the U.S. Department of Housing and Urban Development's Sustainable Communities Program.

Included in the map are food hubs, such as buying clubs, farmers' markets and farm stands, as well as other retail outlets for local food, farms, specialty food producers, distributors, and processors. Most places include contact information in the pop-up windows. You can add your business or organization to the database through our survey. If you see your business or organization on this map and the information is incomplete, please let us know through our survey, Maine's Local Food Network .

This Map was prepared by Lisa Ravis and Laura Teisl at the UMM GIS Laboratory and Service Center. The map supports the GROWashington-Aroostook regional planning process which focuses on job creation, modern infrastructure, and healthy, affordable communities in the counties of Aroostook and Washington in northeastern Maine. More information on this regional planning project is available at <http://www.gro-wa.org>.

You can add your business or organization to the database through our survey: [Maine's Local Food Network](#).

Recommendations for improvements to the map can be sent to Judy East, Executive Director, Washington County Council of Governments at jeast@wccog.net, (207) 454-0465.

Limitations of the map

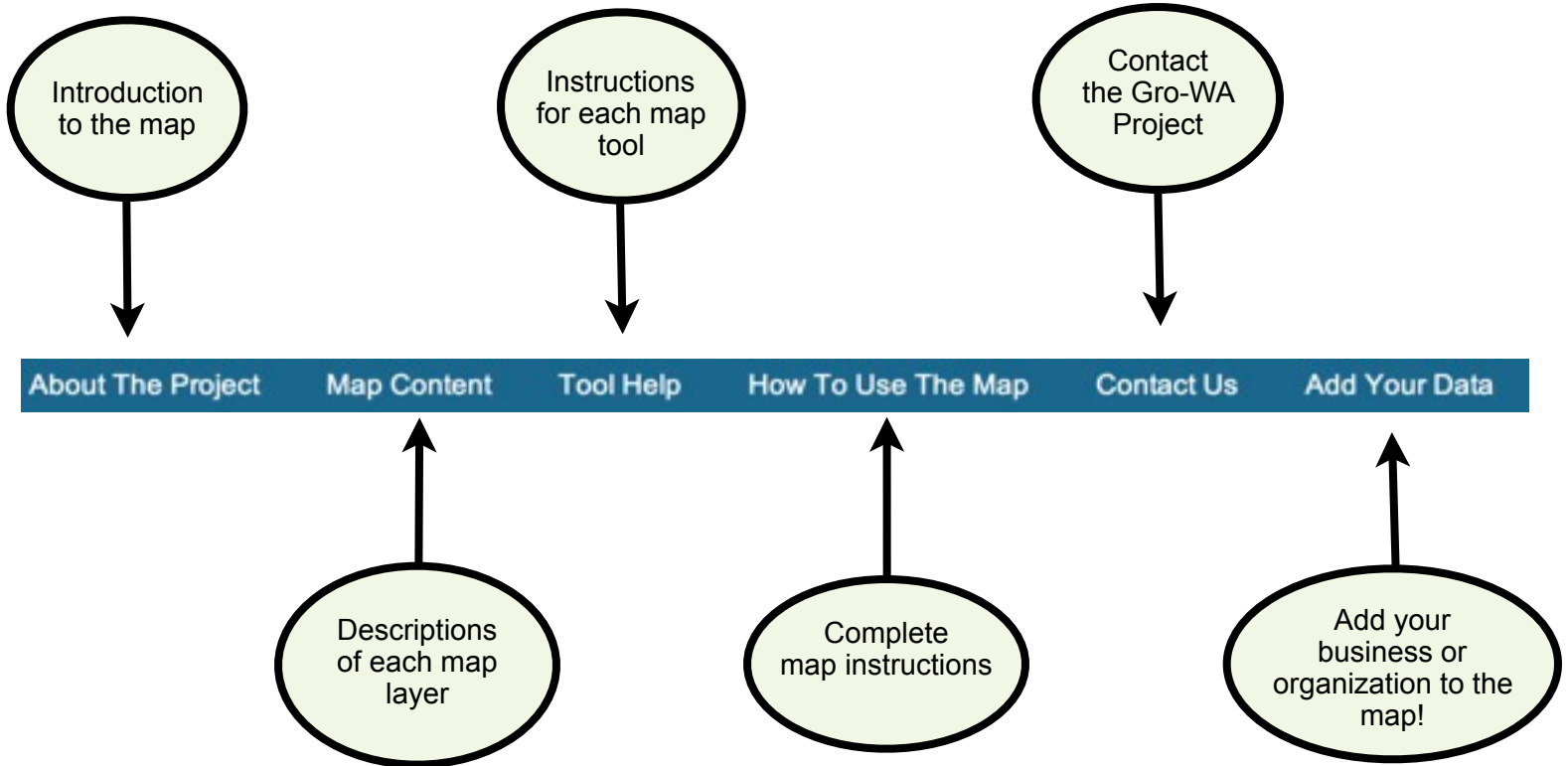
The map is a work in progress. As the database is still under development, there is only a representative sample of local food network locations. If you see your business or organization on this map and the information is incomplete, please let us know through the survey link above.

Maine's Local Food Network - Instructions for using the map

Page 1 of 9

These instructions guide the use of the online map of Maine's Local Food Network prepared by Lisa Ravis and Laura Teisl at the UMM GIS Laboratory and Service Center. The map application supports the GROWashington-Aroostook regional planning process which focuses on job creation, modern infrastructure, and healthy, affordable communities in the counties of Aroostook and Washington in northeastern Maine. More information is available at <http://www.gro-wa.org/>.

Before you begin using the map, you may wish to become familiar with these options in the blue band:



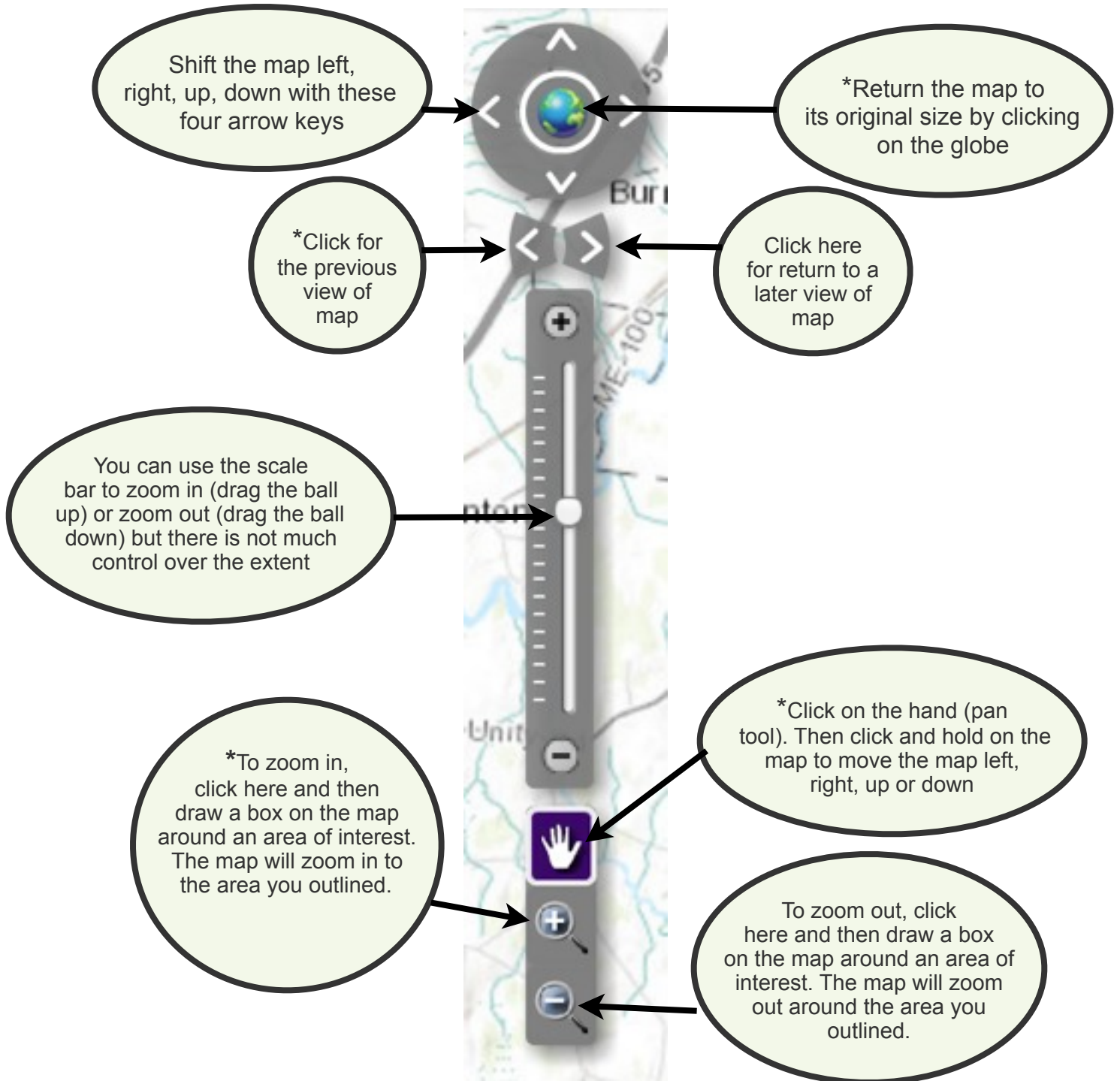
Maine's Local Food Network - Instructions for using the map

Page 2 of 9

These instructions guide the use of the online map of Maine's Local Food Network prepared by Lisa Ravis and Laura Teisl at the UMM GIS Laboratory and Service Center. The map application supports the GROWashington-Aroostook regional planning process which focuses on job creation, modern infrastructure, and healthy, affordable communities in the counties of Aroostook and Washington in northeastern Maine. More information is available at <http://www.gro-wa.org/>.

Navigating the map

There are different options for zooming in and out on the map and locating an area of interest. The zoom features marked with an *asterisk are recommended.



Maine's Local Food Network - Instructions for using the map

Page 3 of 9

These instructions guide the use of the online map of Maine's Local Food Network prepared by Lisa Ravis and Laura Teisl at the UMM GIS Laboratory and Service Center. The map application supports the GROWashington-Aroostook regional planning process which focuses on job creation, modern infrastructure, and healthy, affordable communities in the counties of Aroostook and Washington in northeastern Maine. More information is available at <http://www.gro-wa.org/>.

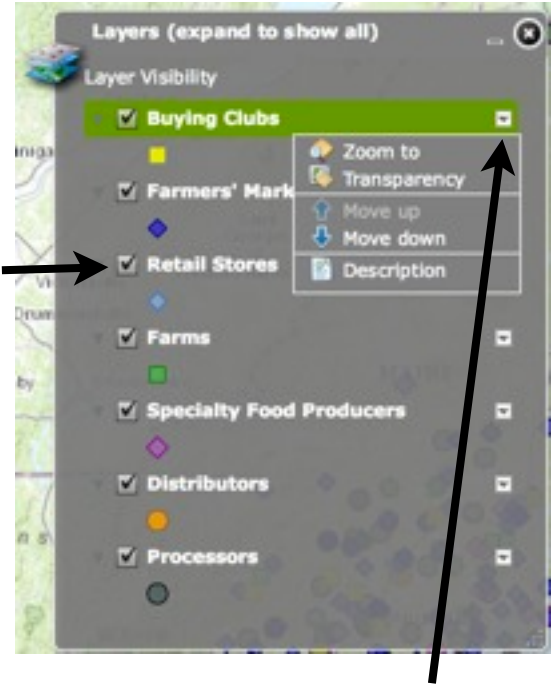
Layers tool

1. Click on the Layers icon in the toolbar to open it:



2. Click on the corner and drag down to view all layers.

3. Turn layers on and off in the checkboxes



4. Click on the drop-down arrow to find additional tools and (under Description) the layer specifications



To learn more about each layer and the information it contains, look under Map Content.

5. Minimize the tool by clicking on the "-".



7. Close the tool by clicking on the "x"

6. Expand the tool again by clicking on the tool icon.



Maine's Local Food Network - Instructions for using the map

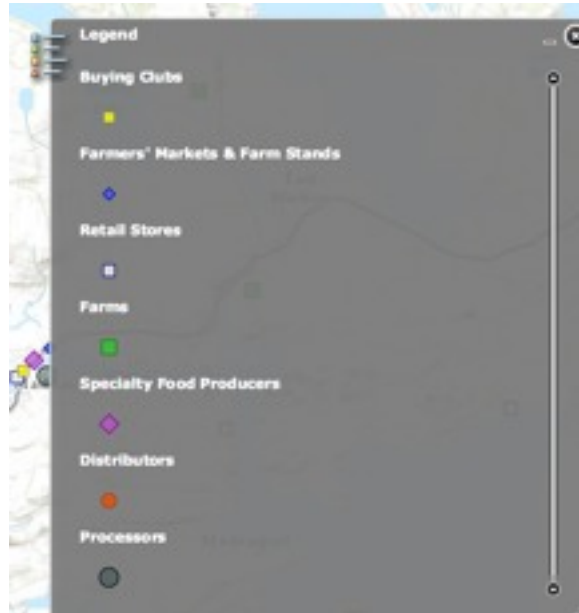


Legend tool

1. Click on the legend icon in the toolbar to open the legend:



2. The legend displays the layers that are active in the map (the ones that are turned on in the Layers tool).



3. Minimize the tool by clicking on the "-".



5. Close the tool by clicking on the "x"

4. Expand the tool again by clicking on the tool icon.



Maine's Local Food Network - Instructions for using the map

Page 5 of 9

These instructions guide the use of the online map of Maine's Local Food Network prepared by Lisa Ravis and Laura Teisl at the UMM GIS Laboratory and Service Center. The map application supports the GROWashington-Aroostook regional planning process which focuses on job creation, modern infrastructure, and healthy, affordable communities in the counties of Aroostook and Washington in northeastern Maine. More information is available at <http://www.growa.org/>.

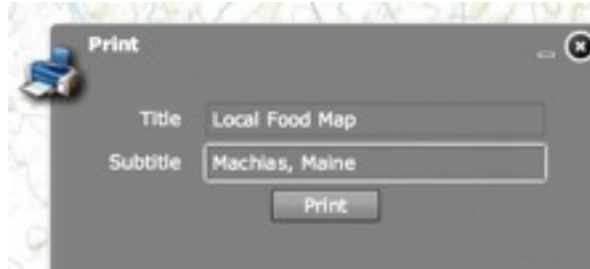


Print tool

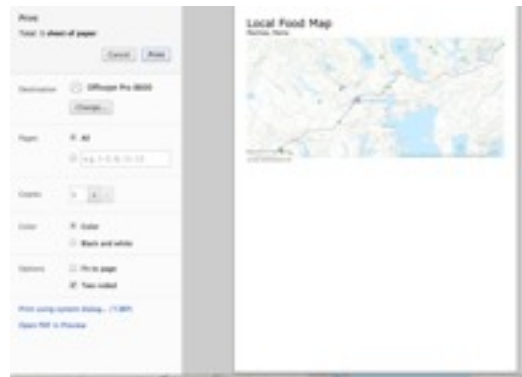
1. To print any region of the map, click on the Print icon in the toolbar to open the print tool.



2. Enter a title and subtitle for your printed map, if desired.



3. A print dialogue box will open and provide a preview.



4. You can minimize the tool by clicking on the “-”.



6. Close the tool by clicking on the “x”

5. Expand the tool again by clicking on the tool icon.



Maine’s Local Food Network - Instructions for using the map



Bookmark tool

1. Bring the map to an area of interest by zooming in to it (see the previous notes about zooming in and out).



2. Click on the Bookmark icon in the toolbar to open the Bookmark tool:



3. Insert a name for your bookmark in the window.

4. Click "Add Bookmark" and it will be saved.



5. Move the map to another area of interest. Then click on the plus symbol:



6. Click on this symbol:

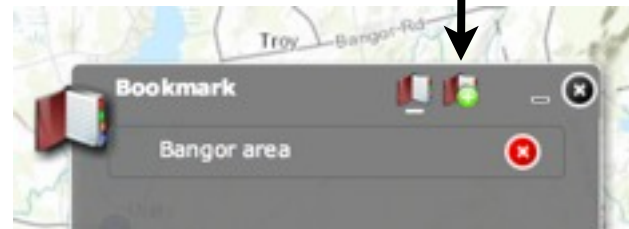


to view all bookmarks.

7. Click on this symbol:



to delete a bookmark.



8. Minimize the tool by clicking on the "-".



10. Close the tool by clicking on the "x"

9. Expand the tool again by clicking on the tool icon.



Maine's Local Food Network - Instructions for using the map

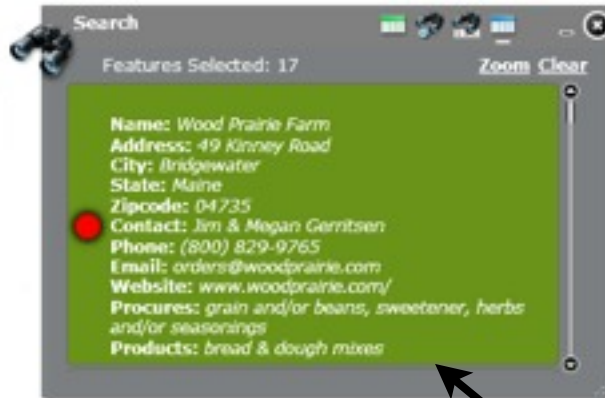
Page 7 of 9

These instructions guide the use of the online map of Maine's Local Food Network prepared by Lisa Ravis and Laura Teisl at the UMM GIS Laboratory and Service Center. The map application supports the GROWashington-Aroostook regional planning process which focuses on job creation, modern infrastructure, and healthy, affordable communities in the counties of Aroostook and Washington in northeastern Maine. More information is available at <http://www.gro-wa.org/>.

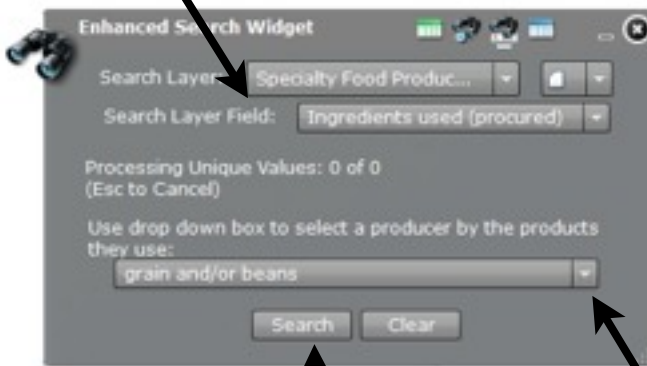


Search tool

1. Click on the Search tool



2. Select a search layer and layer field



4. Click Search

3. Further define your search here



5. View results

6. Minimize the tool by clicking on the "-".



8. Close the tool by clicking on the "x"

7. Expand the tool again by clicking on



Maine's Local Food Network - Instructions for using the map

Page 8 of 9

These instructions guide the use of the online map of Maine's Local Food Network prepared by Lisa Ravis and Laura Teisl at the UMM GIS Laboratory and Service Center. The map application supports the GROWashington-Aroostook regional planning process which focuses on job creation, modern infrastructure, and healthy, affordable communities in the counties of Aroostook and Washington in northeastern Maine. More information is available at <http://www.gro-wa.org/>.



Route Finder tool

1. Click on the Route Finder

2. Click on a blue dot and then click on the map to enter an address

3. Select options for your route

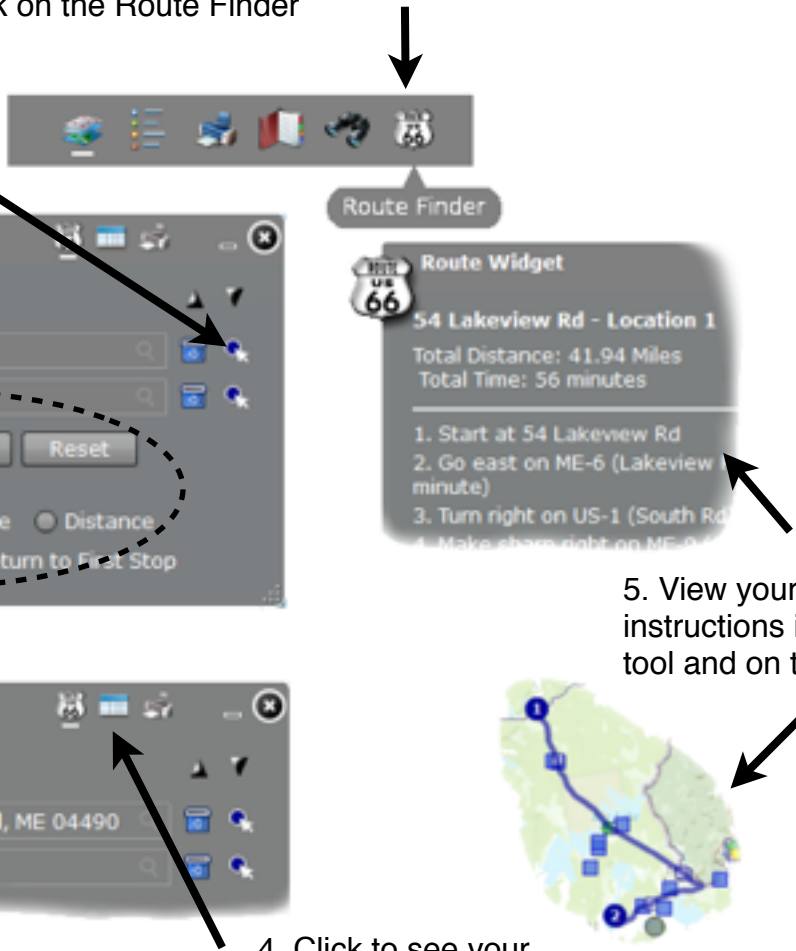
5. View your driving instructions in the tool and on the map!

4. Click to see your driving directions

6. Minimize the tool by clicking on the "-".

8. Close the tool by clicking on the "x"

7. Expand the tool again by clicking on the tool icon.



Maine's Local Food Network - Instructions for using the map

Page 9 of 9

These instructions guide the use of the online map of Maine's Local Food Network prepared by Lisa Ravis and Laura Teisl at the UMM GIS Laboratory and Service Center. The map application supports the GROWashington-Aroostook regional planning process which focuses on job creation, modern infrastructure, and healthy, affordable communities in the counties of Aroostook and Washington in northeastern Maine. More information is available at <http://www.growa.org/>.