

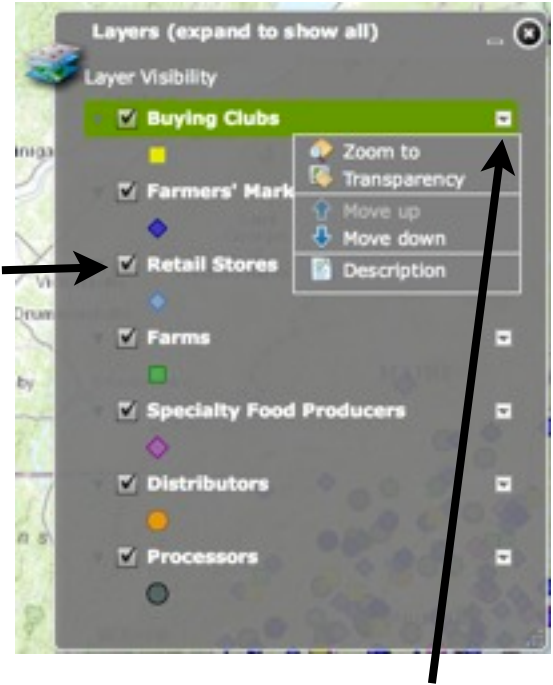
Layers tool

1. Click on the Layers icon in the toolbar to open it:



2. Click on the corner and drag down to view all layers. ↑

3. Turn layers on and off in the checkboxes →



4. Click on the drop-down arrow to find additional tools and (under Description) the layer specifications



To learn more about each layer and the information it contains, look under Map Content.

5. Minimize the tool by clicking on the "-". →



7. Close the tool by clicking on the "x" ←

6. Expand the tool again by clicking on the tool icon. →



Maine's Local Food Network - Instructions for using the map

These instructions guide the use of the online map of Maine's Local Food Network prepared by Lisa Ravis and Laura Teisl at the UMM GIS Laboratory and Service Center. The map application supports the GROWashington-Aroostook regional planning process which focuses on job creation, modern infrastructure, and healthy, affordable communities in the counties of Aroostook and Washington in northeastern Maine. More information is available at <http://www.growa.org/>.

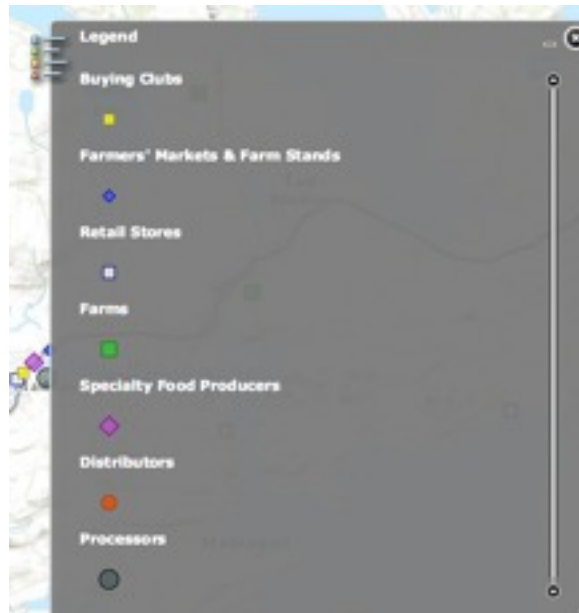


Legend tool

1. Click on the legend icon in the toolbar to open the legend:



2. The legend displays the layers that are active in the map (the ones that are turned on in the Layers tool).



3. Minimize the tool by clicking on the "-".



5. Close the tool by clicking on the "x"

4. Expand the tool again by clicking on the tool icon.



Maine's Local Food Network - Instructions for using the map

These instructions guide the use of the online map of Maine's Local Food Network prepared by Lisa Ravis and Laura Teisl at the UMM GIS Laboratory and Service Center. The map application supports the GROWashington-Aroostook regional planning process which focuses on job creation, modern infrastructure, and healthy, affordable communities in the counties of Aroostook and Washington in northeastern Maine. More information is available at <http://www.growa.org/>.

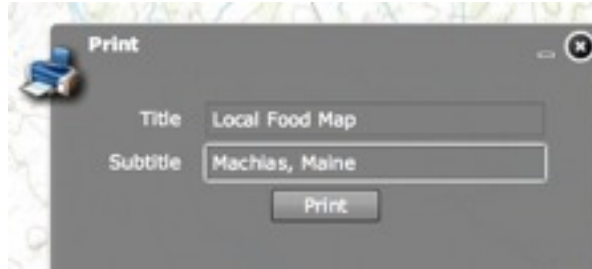


Print tool

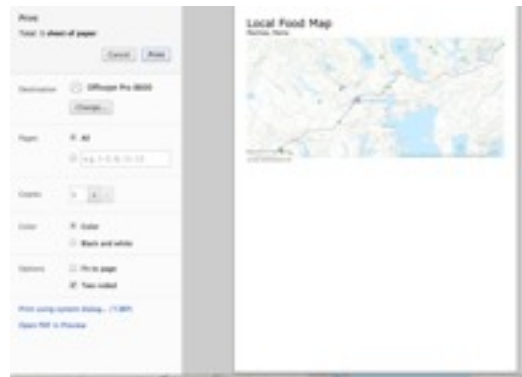
1. To print any region of the map, click on the Print icon in the toolbar to open the print tool.



2. Enter a title and subtitle for your printed map, if desired.



3. A print dialogue box will open and provide a preview.



4. You can minimize the tool by clicking on the “-”.



6. Close the tool by clicking on the “x”

5. Expand the tool again by clicking on the tool icon.



Maine’s Local Food Network - Instructions for using the map

These instructions guide the use of the online map of Maine’s Local Food Network prepared by Lisa Ravis and Laura Teisl at the UMM GIS Laboratory and Service Center. The map application supports the GROWashington-Aroostook regional planning process which focuses on job creation, modern infrastructure, and healthy, affordable communities in the counties of Aroostook and Washington in northeastern Maine. More information is available at <http://www.growa.org/>.

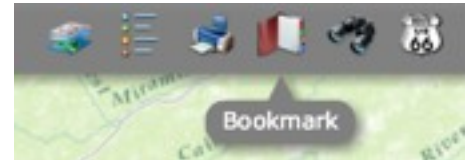


Bookmark tool

1. Bring the map to an area of interest by zooming in to it (see the previous notes about zooming in and out).



2. Click on the Bookmark icon in the toolbar to open the Bookmark tool:



3. Insert a name for your bookmark in the window.

4. Click "Add Bookmark" and it will be saved.



5. Move the map to another area of interest. Then click on the plus symbol:



6. Click on this symbol:

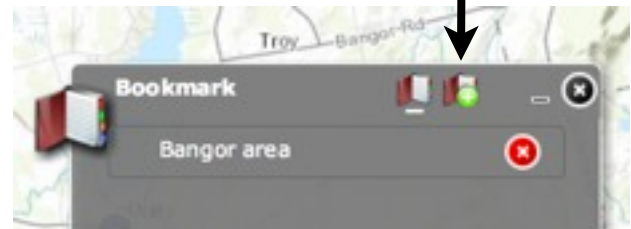


to view all bookmarks.

7. Click on this symbol:



to delete a bookmark.



8. Minimize the tool by clicking on the "-".



10. Close the tool by clicking on the "x"

9. Expand the tool again by clicking on the tool icon.



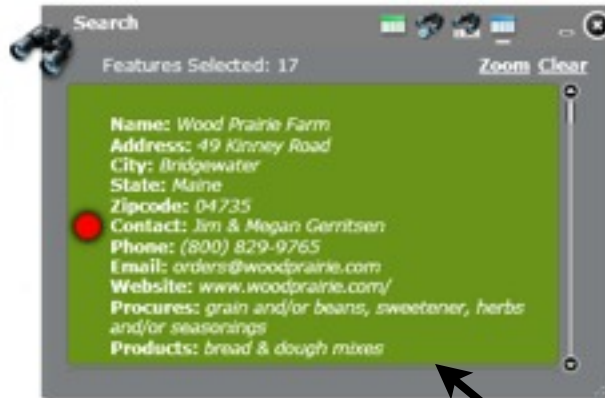
Maine's Local Food Network - Instructions for using the map

These instructions guide the use of the online map of Maine's Local Food Network prepared by Lisa Ravis and Laura Teisl at the UMM GIS Laboratory and Service Center. The map application supports the GROWashington-Aroostook regional planning process which focuses on job creation, modern infrastructure, and healthy, affordable communities in the counties of Aroostook and Washington in northeastern Maine. More information is available at <http://www.gro-wa.org/>.

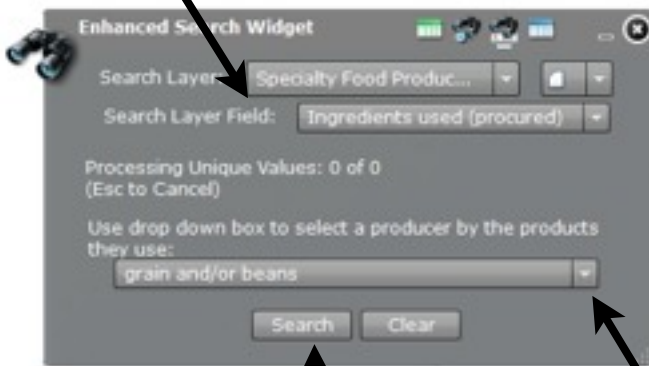


Search tool

1. Click on the Search tool



2. Select a search layer and layer field



4. Click Search

3. Further define your search here



5. View results

6. Minimize the tool by clicking on the "-".



8. Close the tool by clicking on the "x"

7. Expand the tool again by clicking on



Maine's Local Food Network - Instructions for using the map

These instructions guide the use of the online map of Maine's Local Food Network prepared by Lisa Ravis and Laura Teisl at the UMM GIS Laboratory and Service Center. The map application supports the GROWashington-Aroostook regional planning process which focuses on job creation, modern infrastructure, and healthy, affordable communities in the counties of Aroostook and Washington in northeastern Maine. More information is available at <http://www.gro-wa.org/>.



Route Finder tool

1. Click on the Route Finder

2. Click on a blue dot and then click on the map to enter an address

3. Select options for your route

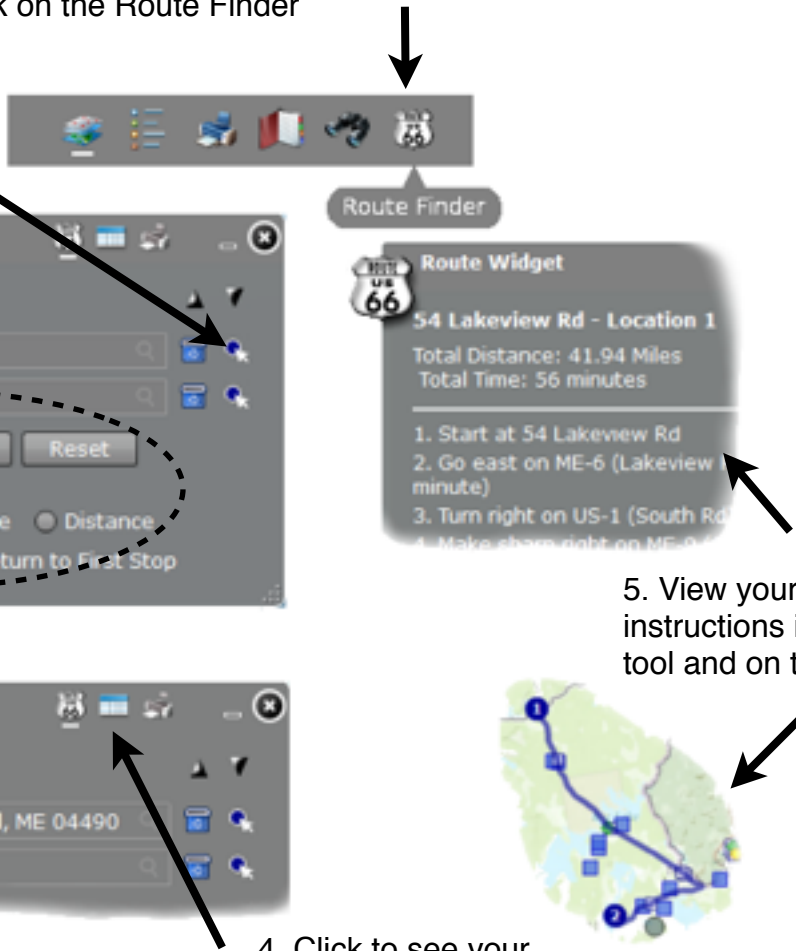
5. View your driving instructions in the tool and on the map!

4. Click to see your driving directions

6. Minimize the tool by clicking on the "-".

8. Close the tool by clicking on the "x"

7. Expand the tool again by clicking on the tool icon.



Maine's Local Food Network - Instructions for using the map

These instructions guide the use of the online map of Maine's Local Food Network prepared by Lisa Ravis and Laura Teisl at the UMM GIS Laboratory and Service Center. The map application supports the GROWashington-Aroostook regional planning process which focuses on job creation, modern infrastructure, and healthy, affordable communities in the counties of Aroostook and Washington in northeastern Maine. More information is available at <http://www.growa.org/>.