

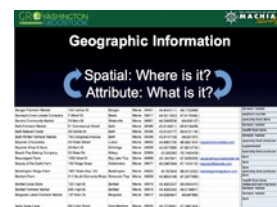
Mapping Local Foods ~ GROWashington-Aroostook

Tora Johnson, Lisa Ravis and Laura Teisl
GIS Laboratory University of Maine at Machias
giscenter@maine.edu / 207.255.1214



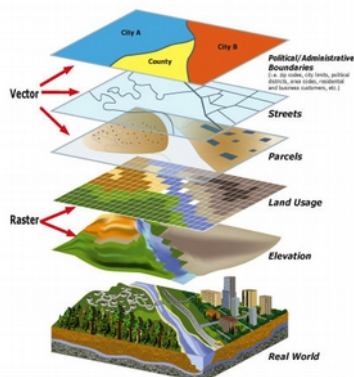
Elements of Web-Based Geographic Information Systems

- **Geographic data:** Info about where things are & what's there.
- **Layers:** Groups of similar features stored on computer or web
- **Map:** Layers collected using GIS software
- **Map App:** Web page for user interface and special functions or tools



Geographic Information

- **Spatial:** Where is it? Address, latitude/ longitude, UTM coordinates.
- **Attribute:** What is it? Names, phone numbers, categories, stats, web addresses.

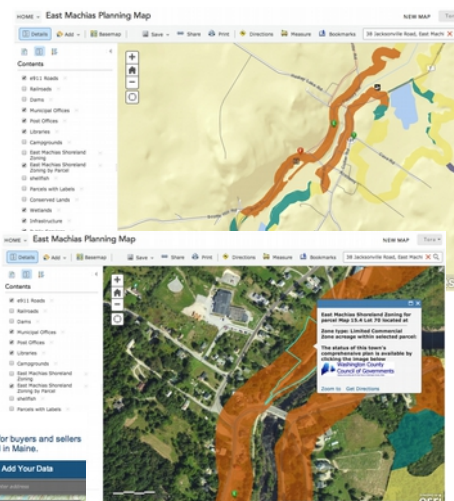


Geographic Information Systems

- Computer-based mapping technology
- Layers of geographic data
- Mix & match
- Analyze & Query

Web-Hosted GIS Layers

- Data layers to mix & match
- Stored on a server
- Can come from many sources
- Add to web or desktop maps
- Points, lines, polygons or image



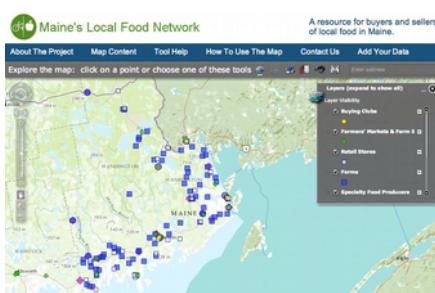
National Weather Service, Southern Region,
NOAA. <http://www.srh.noaa.gov/images/bmx/gis/ayers.jpg>

GIS Software allows you to...

- Make GIS maps by combining and symbolizing layers
- View geographic data
- Analyze geographic phenomena

Web Map Application

- Specially formatted webpage
- Simplified map user interface
- Specific functionality



Web Map App: Maine's Local Food Network with simple interface and specialized basic functions

Maine's Local Food Network Map App

- Statewide data
- Buying clubs, farms, markets, stands, stores, specialty producers, processors, distributors
- Add your own!

Important Links

- GroWA food page: <http://gro-wa.org/wcfood>
- Online Local Food Network Map App: <http://gro-wa.org/foodMap/>
- Add your business or resource to the map (survey): <https://www.surveymonkey.com/s/LocalFoodSystemMaine>



This project was supported by the United States Department of Housing and Urban Development under a Sustainable Communities Regional Planning grant. The opinions, findings, conclusions and recommendations herein do not necessarily represent the official position or policies of the United States Government.