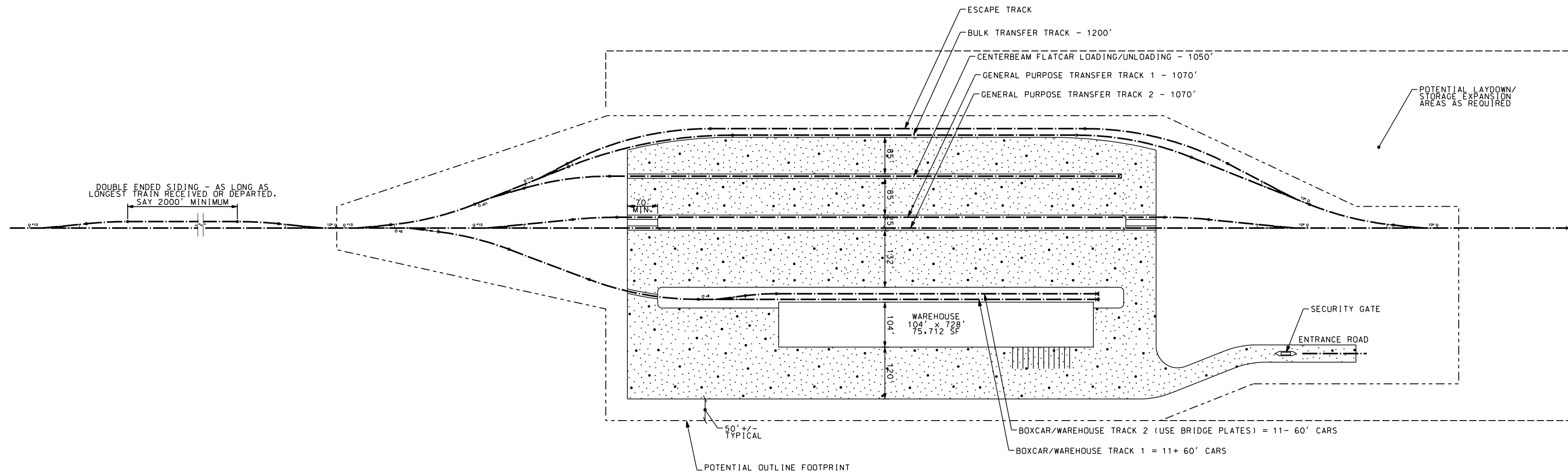
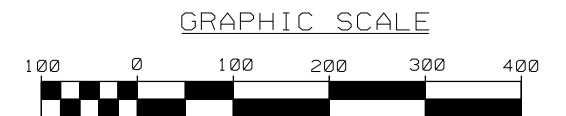
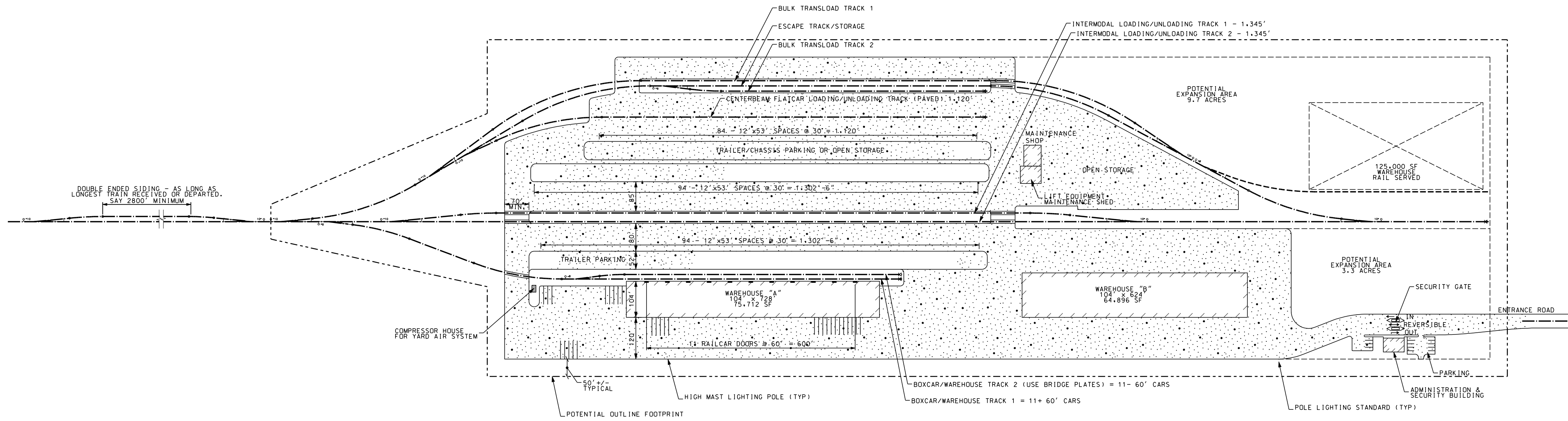


EASTPORT FREIGHT RAIL RESTORATION STUDY		FIGURE 3 - 11	
PERRY TRANSLOAD FACILITY POTENTIAL PHASE 1		<b>HNTB</b>	AUGUST 2009

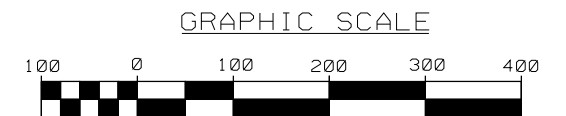


OUTLINE FOOTPRINT = 32.4 ACRES  
 PAVED AREA AS DRAWN = 13.4 ACRES  
 POTENTIAL LAYDOWN/STORAGE EXPANSION = 15.3 ACRES

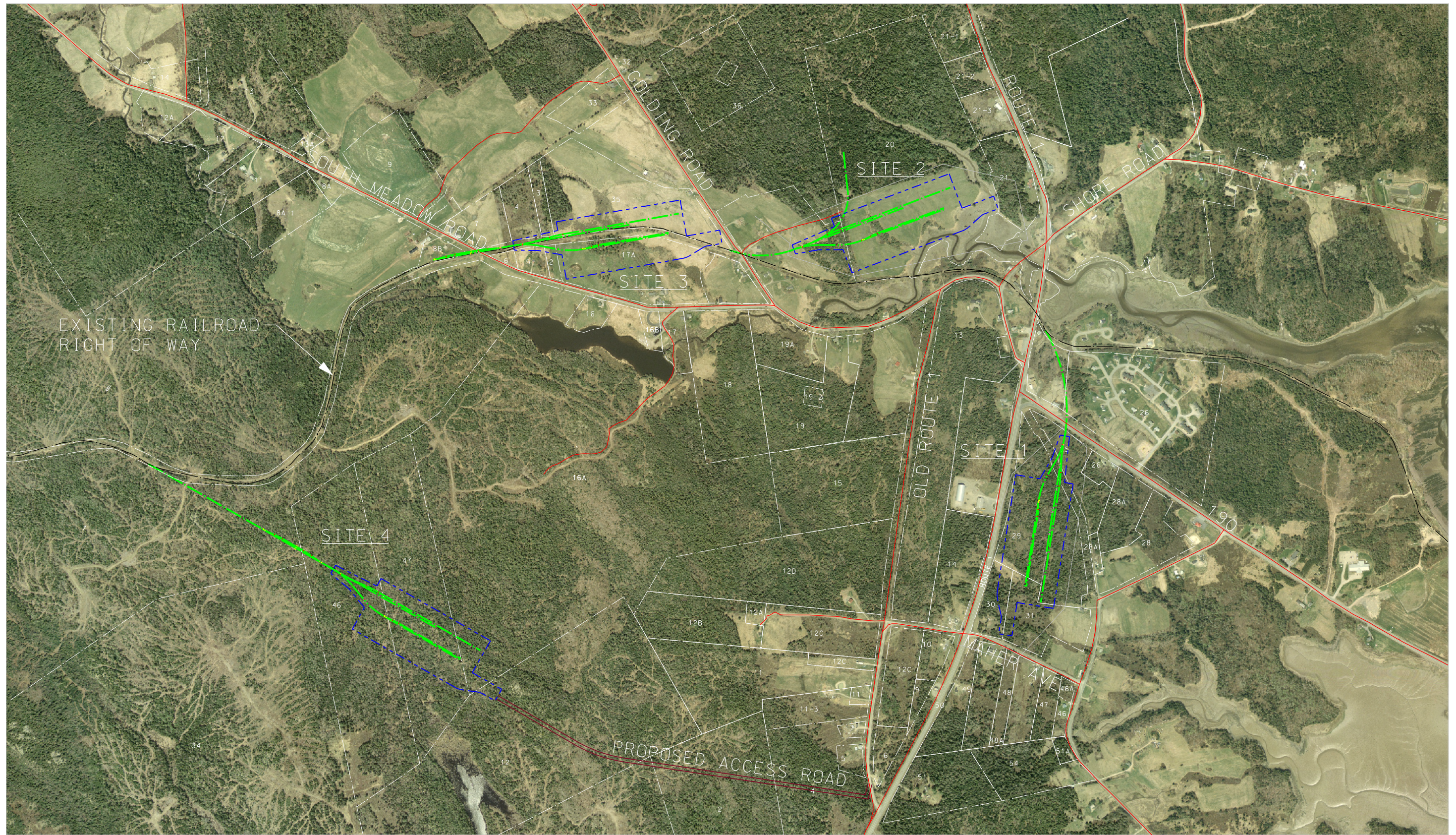




POTENTIAL OUTLINE FOOTPRINT = 69.5 ACRES  
 PAVED AREA AS SHOWN = 38.1 ACRES



EASTPORT FREIGHT RAIL RESTORATION STUDY		FIGURE 3 - 13	
PERRY TRANSLOAD FACILITY POTENTIAL PHASE 3		<b>HNTB</b>	AUGUST 2009



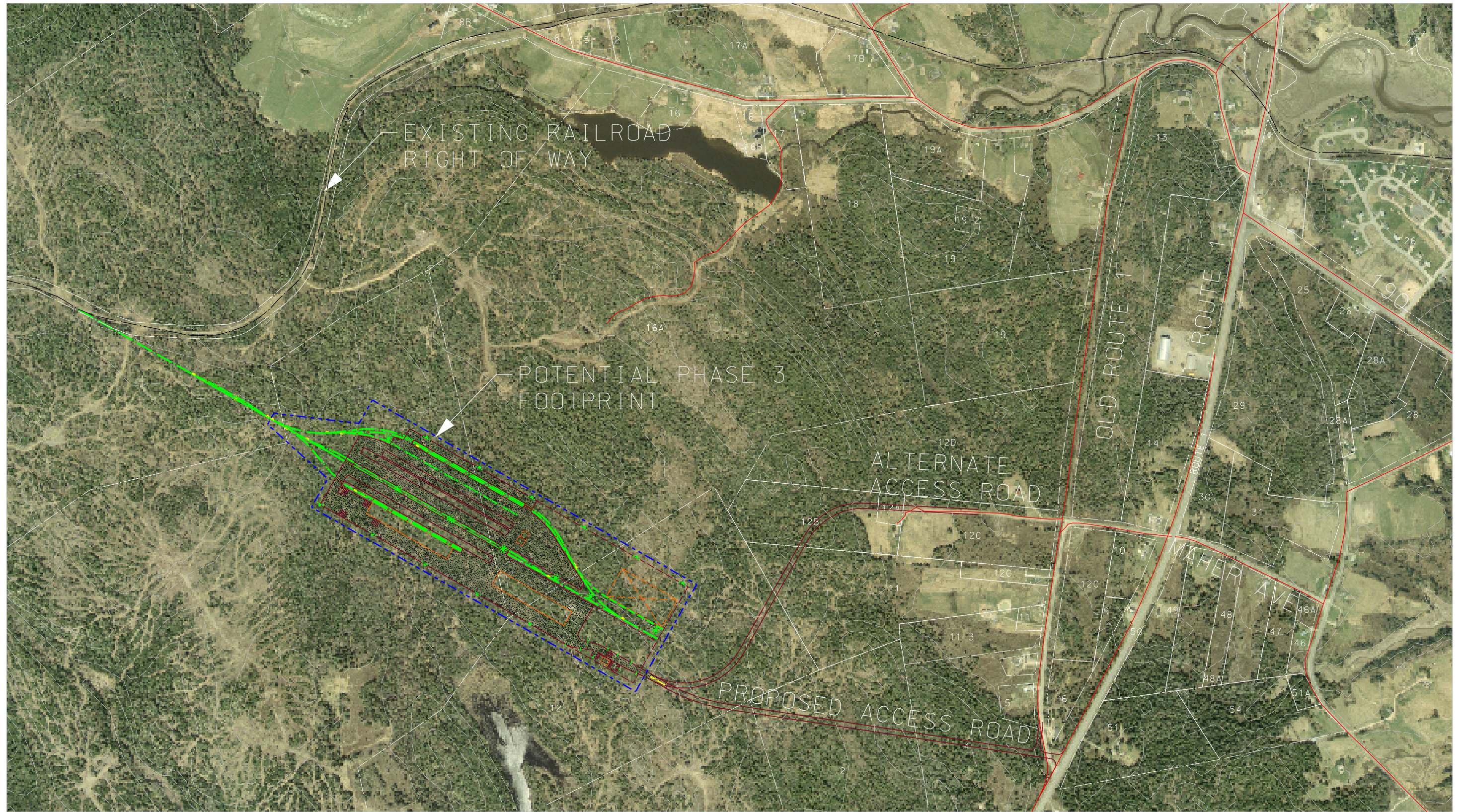
- PROPOSED TRACK
- FACILITY OUTLINE - PHASE 1

EASTPORT FREIGHT RAIL RESTORATION STUDY

PERRY, ME  
 POTENTIAL TRANSLOAD SITES

FIGURE 3 - 14

**HNTB** AUGUST  
 2009



EASTPORT FREIGHT RAIL RESTORATION STUDY

PERRY, ME  
 SITE 4 - PHASE 3 FACILITY

FIGURE 3 -15

**HNTB** AUGUST 2009